

Mirror Mirror: The Prints of Alison Saar
SGCI Lifetime Achievement Award
From the Collections of Jordan D. Schnitzer
Travelling Exhibition
March 8 – May 11, 2019



Alison Saar (American (b. 1956))
Arcade Suite: Hand to Mouth, edition 7/20, 2000
woodcut
12 x 10 in.
2018.369a



Alison Saar (American (b. 1956))
Arcade Suite: Heart, Hand, Heart, edition 7/20, 2000
woodcut
12 x 10 in.
2018.369b



Alison Saar (American (b. 1956))
Arcade Suite: Man with Hat, edition 7/20, 2000
woodcut
12 x 10 in.
2018.369c



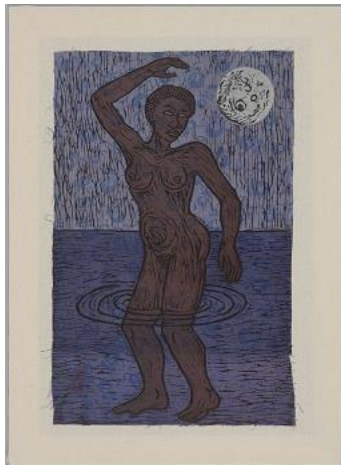
Alison Saar (American (b. 1956))
Arcade Suite: Mirror, edition 7/20, 2000
woodcut
12 x 10 in.
2018.369d



Alison Saar (American (b. 1956))
Arcade Suite: Red Girl, edition 7/20, 2000
woodcut
12 x 10 in.
2018.369e



Alison Saar (American (b. 1956))
Arcade Suite: Rose Tattoo, edition 7/20, 2000
woodcut
12 x 10 in.
2018.369f



Alison Saar (American (b. 1956))
Black Bottom Stomp, edition 6/18, 2017
woodcut and linoleum cut on indigo dyed vintage quilt pieces
18 x 11 3/4 in.
2017.446



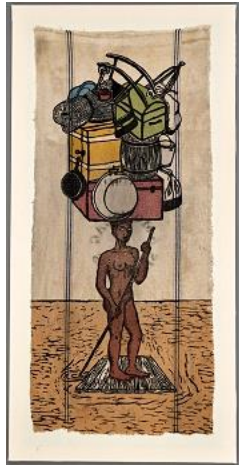
Alison Saar (American (b. 1956))
Blue Plate Special, edition AP 2/4, 1993
woodcut, chine colle and collage
26 x 19 1/2 in.
2018.370



Alison Saar (American (b. 1956))
Blue Plate Special, edition AP 2/4, 1993
etching, lithograph, and chine-collé
29 x 28 5/8 in.
2018.360



Alison Saar (American (b. 1956))
Bramblin' Blues, edition 5/10, 2014
woodcut, shellac, koso
7 1/8 x 9 in.
2018.363



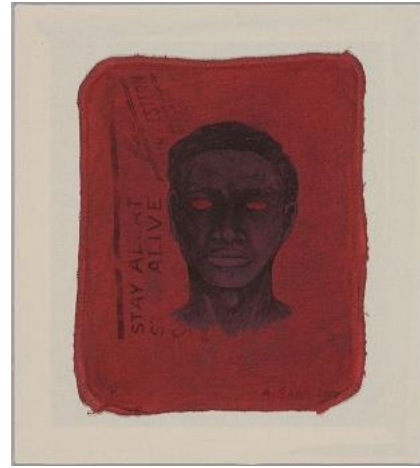
Alison Saar (American (b. 1956))
Breach, edition 8/18, 2017
woodcut on vintage linen seed sack
42 1/2 x 18 3/4 in.
2017.598



Alison Saar (American (b. 1956))
Brierpatch Blues, edition 40/60, 2014
serigraph and woodcut
38 5/8 x 23 7/8 in.
2018.362



Alison Saar (American (b. 1956))
Cat's Cradle, edition 2/30, 2015
woodcut
24 x 13 1/2 in.
2015.280



Alison Saar (American (b. 1956))
Coal Black Blues, edition 15/21, 2017
intaglio on stained cotton shop rags
14 1/4 x 11 1/2 in.
2017.447



Alison Saar (American (b. 1956))
Compton Nocturne, edition 8/28, 2012
lithograph
19 1/4 x 25 1/4 in.
2015.29



Alison Saar (American (b. 1956))
Conked, edition AP, 1997
woodcut
22 3/4 x 30 in.
2015.30



Alison Saar (American (b. 1956))
Cotton Eater (head), 2013
ceramic, acrylic, graphite and cotton bolls
7 1/2 x 13 x 10 1/2 in.
2017.623



Alison Saar (American (b. 1956))
Cotton Eater, edition 1/6, 2014
woodcut on found sugar sack quilt
72 x 34 in.
2015.47



Alison Saar (American (b. 1956))
Coup de Grâce, edition 6/16, 2012
lithograph
19 1/4 x 25 in.
2015.31



Alison Saar (American (b. 1956))
Delta Doo, 2002
monoprint, woodcut and chine collé
33 7/8 x 24 3/8 in.
2015.32



Alison Saar (American (b. 1956))
Deluge, edition 2/30, 2016
woodcut
23 1/2 x 14 5/8 in.
2018.364



Alison Saar (American (b. 1956))
Dig, edition AP 5/5, 2009
woodblock
12 1/8 x 9 3/4 in.
2018.373



Alison Saar (American (b. 1956))
Equinox, edition 2/16, 2012
hand sewn lithograph with collage element
48 x 16 in.
2015.33



Alison Saar (American (b. 1956))
Fall, 24/25, 2014
etching, monotype and chine colle
22 1/4 x 15 in.
2018.372



Alison Saar (American (b. 1956))

Girl with a Pearl Earring, edition TP 1, 2018

soft ground, spit bite, and aquatint etching with gampi chine-colle

15 x 12 in.

2018.422



Alison Saar (American (b. 1956))

High Cotton, edition 1/8, 2017

linocut and offset monotype woodcut

25 1/8 x 16 in.

2017.597



Alison Saar (American (b. 1956))

High Yella' Blue, edition 3/21, 2016

intaglio, pochoir

12 1/4 x 12 1/4 in.

2016.93



Alison Saar (American (b. 1956))

Hooch n' Hoochie Coochie, 2016

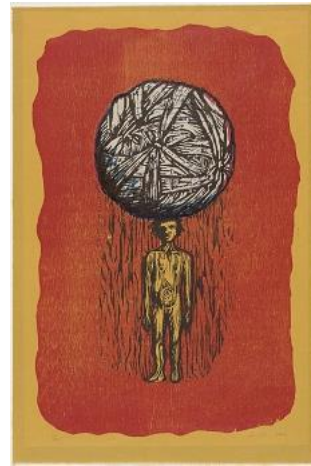
wood, acrylic, ash, tar and wax and found ceramic jug

25 x 8 x 8 in.

2017.626



Alison Saar (American (b. 1956))
Indigo Blue (Holly Sugar), edition 2/3, 2016
intaglio
12 1/8 x 12 in.
2016.89



Alison Saar (American (b. 1956))
Inheritance, edition 35/40, 2003
woodcut and chine collé
31 1/2 x 21 in.
2015.36



Alison Saar (American (b. 1956))
Janus, edition 8/10, 2004
intaglio and hand inking
22 1/4 x 30 in.
2015.37



Alison Saar (American (b. 1956))
Mirror, Mirror (Mulata Seeking Inner Negress), 2006
wood, copper, tin and bronze
57 1/2 x 16 1/2 x 16 in.
2019.29



Alison Saar (American (b. 1956))
Mirror, Mirror; Mulatta Seeking Inner Negress, edition 8/10,
2014
woodcut and chine collé on found sugar sack
40 1/2 x 23 1/2 in.
2014.253



Alison Saar (American (b. 1956))
Muddy Water, edition 6/12, 2017
monotype and linocut
16 1/4 x 12 1/2 in.
2017.456



Alison Saar (American (b. 1956))
Pallor Tricks, edition 10/20, 2004
intaglio and collagraph
29 1/2 x 28 in.
2015.39



Alison Saar (American (b. 1956))
Pallor Trick, edition 5/5, 2013
cast bronze, stone and silk
14 1/4 x 5 1/2 x 6 in.
2017.624



Alison Saar (American (b. 1956))
Redbone Blues, edition 9/21, 2017
intaglio on found vintage handkerchief
15 1/4 x 15 3/4 in.
2017.450



Alison Saar (American (b. 1956))
Shorn, edition 7/30, 2014
woodcut
29 x 19 in.
2014.254



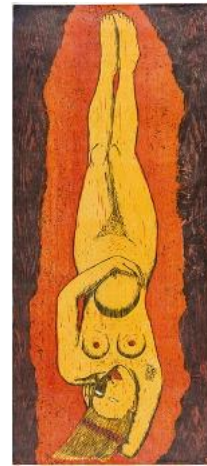
Alison Saar (American (b. 1956))
Snake Man, edition AP 3/4, 1994
lithograph and woodcut
28 x 37 in.
2018.371



Alison Saar (American (b. 1956))
Somnambulist, edition 4/30, 1991
woodcut
25 x 18 in.
2018.365



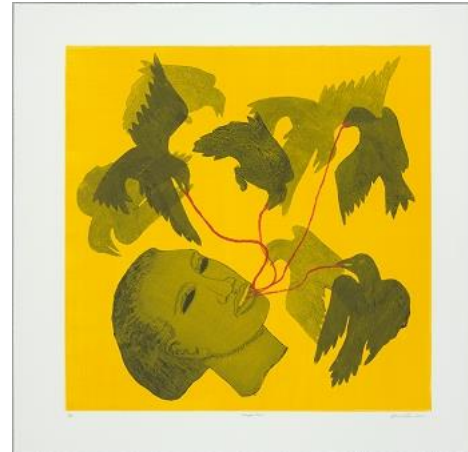
Alison Saar (American (b. 1956))
Stanch, edition 4/18, 2017
woodcut on vintage linen seed sack
43 1/2 x 19 1/4 in.
2017.599



Alison Saar (American (b. 1956))
Sweeping Beauty, edition AP, 1997
woodcut
76 x 33 in.
2015.41



Alison Saar (American (b. 1956))
Tango, edition 4/9, 2005
woodcut
25 3/4 x 38 3/4 in.
2015.42



Alison Saar (American (b. 1956))
Tongue Tied, edition 6 of 10, 2004
intaglio
30 x 30 in.
2015.43



Alison Saar (American (b. 1956))
Topsy and the Golden Fleece, edition 1/20, 2017
woodcut monotype, softground etching with hand-applied
gold, gampi chine collé
23 1/8 x 16 in.
2017.458



Alison Saar (American (b. 1956))
Ulysses, edition AP 1/10, 1994
woodcut
51 x 23 in.
2015.44



Alison Saar (American (b. 1956))
Washtub Blues, edition AP 5/8, 2000
woodcut
30 x 22 in.
2015.46



Alison Saar (American (b. 1956))
White Guise, 2018
wood, copper, ceiling tin, bronze and tar
91 x 40 x 30 in.
2018.233

Alison Saar (American (b. 1956))

White Guise Print, edition AP, 2018–19

woodcut, relief, shellac-stained paper, hand-tinted iron

55 x 27 1/2 in.

2019.28