

Supermarket: Pop Art and 1960s America

From the Collections of Jordan D. Schnitzer and His Family Foundation
Brigham Young University Museum of Art, December 6, 2019 to March 28, 2020



Robert Indiana (American (b. 1928))

American Dream #5 Series: American Dream, edition 36/100,

1980

screenprint

26 5/8 x 26 5/8 in.

2000.47a



Robert Indiana (American (b. 1928))

American Dream #5 Series: Die, edition 36/100, 1980

screenprint

26 5/8 x 26 5/8 in.

2000.47c



Robert Indiana (American (b. 1928))

American Dream #5 Series: Eat, edition 36/100, 1980

screenprint

26 5/8 x 26 5/8 in.

2000.47b



Robert Indiana (American (b. 1928))

American Dream #5 Series: Err, edition 36/100, 1980

screenprint

26 5/8 x 26 5/8 in.

2000.47d



Robert Indiana (American (b. 1928))
American Dream #5 Series: Hug, edition 36/100, 1980
screenprint
26 5/8 x 26 5/8 in.
2000.47e



Robert Indiana (American (b. 1928))
Classic Love, edition 58/150, n.d.
wool tapestry wove from skein dyed, hand carved and hand tufted archival New Zealand wool
72 x 72 in.
2006.339



Jasper Johns (American (b. 1930))
Target with Four Faces, edition 89/100, 1968
screenprint
36 1/4 x 26 3/8 in.
2003.204



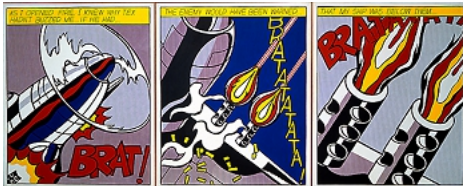
Jasper Johns (American (b. 1930))
Technics and Creativity: Target, edition of 22,500, 1971
offset lithograph and collage
10 3/8 x 8 3/8 in.
2009.105



Jasper Johns (American (b. 1930))
Two Maps I, edition 24/30, 1966
lithograph
33 x 26 in.
2000.45



Jasper Johns (American (b. 1930))
Untitled (Coca-Cola and Grid), edition 53/66, 1971
lithograph
39 x 29 1/2 in.
2005.181



Roy Lichtenstein (American (1923–1997))
As I Opened Fire Poster, 1 of 3140 copies, 1966
offset lithograph
25 3/16 x 20 3/4 in.
1994.46a–c



Roy Lichtenstein (American (1923–1997))
Cathedral Series: Rouen Cathedral #1, edition AP 8/10, 1969
lithograph and screenprint
48 1/2 x 32 1/4 in.
1993.15



Roy Lichtenstein (American (1923–1997))

Cathedral Series: Rouen Cathedral #6, edition AP 8/10, 1969

lithograph

48 5/16 x 32 5/16 in.

1993.28



Roy Lichtenstein (American (1923–1997))

This Must Be the Place, edition 271/300, 1965 (reprint 2002)

screenprint

23 3/4 x 17 3/4 in.

2004.355



Claes Oldenburg (American, born Sweden (b.1929))

London Knees; from The Knees as London Monument Project, edition 118/120, 1966, published 1968

cast flexible latex coated in polyurethane on an acrylic base

14 3/16 x 5 3/4 x 6 3/4 in.

2010.92



Claes Oldenburg (American, born Sweden (b.1929))

Miniature Soft Drum Set, edition 3/200, 1969

screenprint

9 3/4 x 19 x 13 3/4 in.

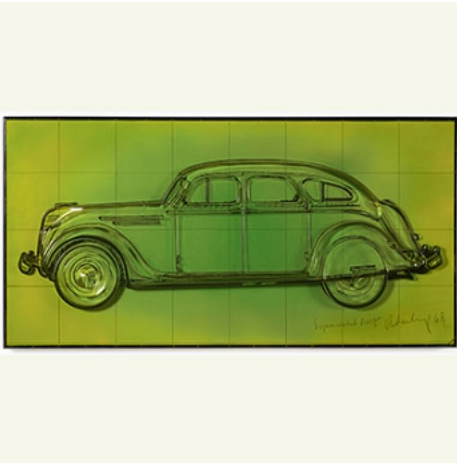
1999.10



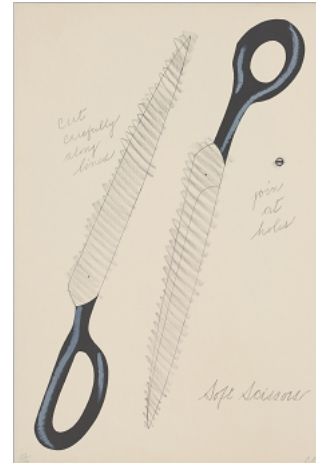
Claes Oldenburg (American, born Sweden (b.1929))
Notes series: Untitled (Geometric Mouse), edition 49/100, 1968
 lithograph
 22 5/8 x 15 3/4 in.
 2001.21e



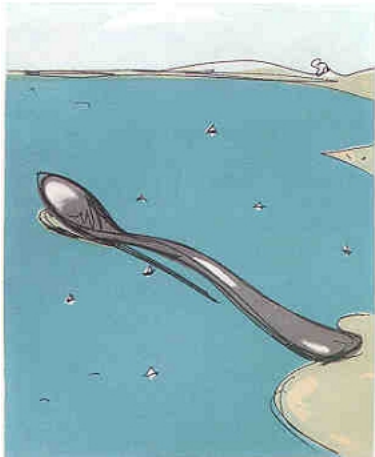
Claes Oldenburg (American, born Sweden (b.1929))
Notes series: Untitled (Ice Cream Cones), edition 49/100, 1968
 lithograph
 22 5/8 x 15 3/4 in.
 2001.21c



Claes Oldenburg (American, born Sweden (b.1929))
Profile Airflow (Axsom & Platzker 59), experimental proof 1/3, 1968-70
 cast-polyurethane relief over lithograph
 33 1/2 x 64 1/2 x 4 in.
 2014.65



Claes Oldenburg (American, born Sweden (b.1929))
Scissors to Cut Out, from the National Collection of Fine Arts Portfolio, edition 23/144, 1967, published 1968
 lithograph
 30 x 20 in.
 2004.289



Claes Oldenburg (American, born Sweden (b.1929))

Spoon Pier, edition XXI/XXV, 1975

softground etching, aquatint

28 x 22 1/4 in.

2001.60



Claes Oldenburg (American, born Sweden (b.1929))

Tea Bag, from the portfolio Four on Plexi, edition 85/125, 1966
screenprint with felt and cord on vinyl and vacuum formed vinyl

38 3/8 x 27 1/8 in.

2006.88



Robert Rauschenberg (American (1925–2008))

Cardbird Series: Cardbird Door, edition 1/25, 1971

offset lithograph and screenprint with collage of tape, wood,
and metal

80 x 30 in.

2011.150



Robert Rauschenberg (American (1925–2008))

*Passport, from the portfolio Ten from Leo Castelli, edition
110/200, 1967*

screenprint on 3 rotating plexiglass parts

19 9/10 in.

2006.384g



Robert Rauschenberg (American (1925–2008))
Signs, edition 44/250, 1970
 screenprint
 35 x 26 in.
 516



Robert Rauschenberg (American (1925–2008))
Stoned Moon Series: Sky Garden, edition 1/35, 1969
 lithograph and screenprint
 89 x 41 3/4 in.
 2004.324



James Rosenquist (American (b. 1933))
Marilyn, edition 62/75, 1974
 lithograph
 41 3/4 x 29 1/2 in.
 2012.68



James Rosenquist (American (b. 1933))
Zone (red), unique trial proof, 1972
 lithograph
 31 1/2 x 30 1/4 in.
 2011.48



James Rosenquist (American (b. 1933))

Zone, edition 59/66, 1972

lithograph

31 x 30 1/4 in.

2011.47



Ed Ruscha (American (b. 1937))

America Her Best Product, from Kent Bicentennial Portfolio: Spirit of Independence, edition of 125, 1974

lithograph

31 3/8 x 23 1/2 in.

2013.71k



Ed Ruscha (American (b. 1937))

Every Building on the Sunset Strip (E. B4), edition of 5000, 1966

/ 1970

black offset lithograph; glued and folded with 27 pleats

7 x 5 5/8 x 3/8 in.

2009.48



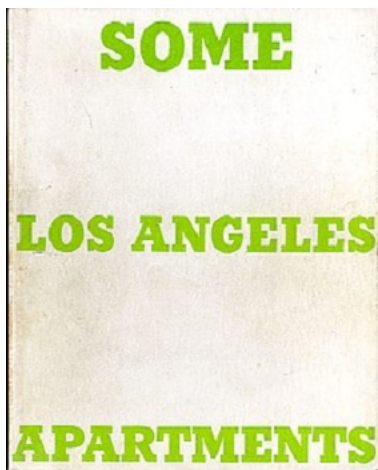
Ed Ruscha (American (b. 1937))

Mocha Standard, edition 64/100, 1969

screenprint

24 7/8 x 40 in.

1996.40



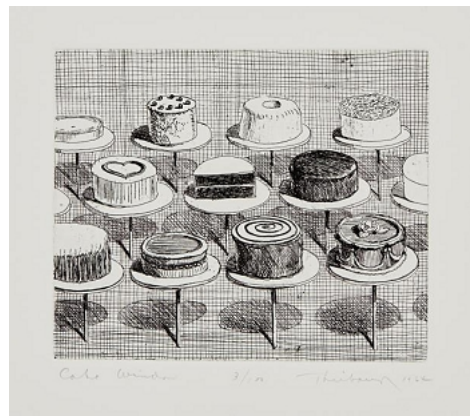
Ed Ruscha (American (b. 1937))

Some Los Angeles Apartments (E. B3), edition of 3000, 1965 / 1970

black offset lithograph; sewn and glued

7 X 5 1/2 X 1/4 inches

2009.47



Wayne Thiebaud (American (b. 1920))

Cake Window, from Delights, edition 3/100, 1964

etching

11 7/8 x 10 7/8 in.

2017.143



Wayne Thiebaud (American (b. 1920))

Gumball Machine, from Seven Still Lifes and a Silver Landscape, edition 23/50, 1970

color linocut

30 1/4 x 22 31/8 in.

2001.102



Wayne Thiebaud (American (b. 1920))

Little Red Suckers, edition 22/35, 1971/2014

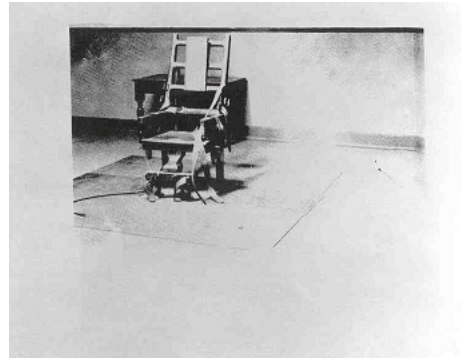
aquatint

10 x 10 1/2 in.

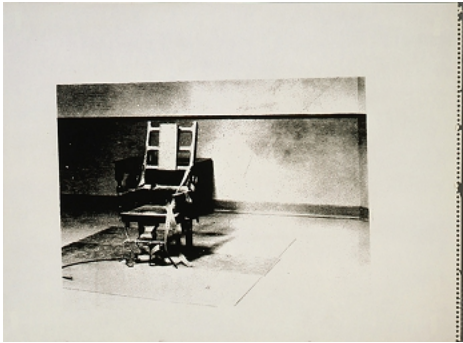
2015.140



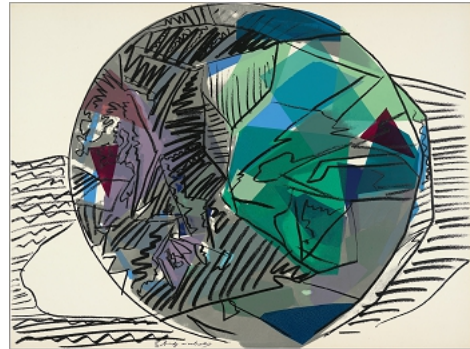
Andy Warhol (American (1928–1987))
Cow 1966, 1966
screenprint on wallpaper
each of six panels: 90 x 28 3/8 inches
2016.124a–f



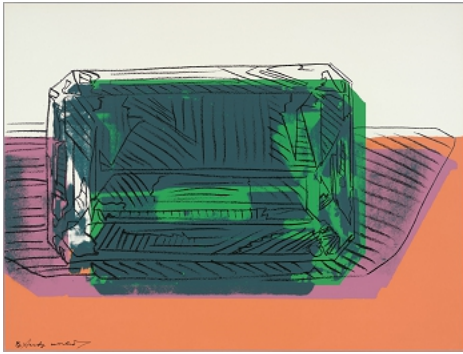
Andy Warhol (American (1928–1987))
Electric Chair (Not in the F. & S.), 1978 circa
screenprint
17 1/2 x 22 1/2 in.
1999.60



Andy Warhol (American (1928–1987))
Electric Chair (Retrospective Series) (IIIA.4(a)), 1978 circa
screenprint
18 x 24 in.
2006.171



Andy Warhol (American (1928–1987))
Gems, edition 5/20, 1978
screenprint
30 1/8 x 40 in.
2015.209d



Andy Warhol (American (1928–1987))

Gems, edition 5/20, 1978

screenprint

30 1/8 x 40 in.

2015.209b



Andy Warhol (American (1928–1987))

\$1.57 Giant Size (II.2), edition 25/75, 1963, signed & numbered

in 1971

screenprint

12 1/4 x 12 1/4 in.

1999.114



Andy Warhol (American (1928–1987))

\$1.57 Giant Size (II.2), edition 26/75, 1963, signed &

numbered in 1971

screenprint

12 1/4 x 12 1/4 in.

1999.115



Andy Warhol (American (1928–1987))

\$1.57 Giant Size (II.2), edition 27/75, 1963, signed & numbered

in 1971

screenprint

12 1/4 x 12 1/4 in.

1999.116



Andy Warhol (American (1928–1987))

*\$1.57 Giant Size (II.2), edition 2/75, 1963, signed & numbered
in 1971
screenprint
12 1/4 x 12 1/4 in.
1999.106*



Tom Wesselmann (American (1931–2004))

*TV Still Life, plate 7 from the Portfolio 11 Pop Artist, Vol. III,
edition 54/200, 1965
screenprint
29 x 38 1/8 in.
2008.242k*