

## The World Stage

*Contemporary Art from the Collections of Jordan Schnitzer and His Family Foundation*

Nevada Museum of Art, Reno, Nevada

March 14 – May 24, 2020



**Radcliffe Bailey (American (b. 1969))**

*Between Two Worlds, edition 8/30, 2003*

color sugar lift, spitbite and aquatint etching with drypoint,  
color photography, chine collé and velvet

44 x 30 in.

2004.193



**Radcliffe Bailey (American (b. 1969))**

*Until I Die/Crossing, edition 18/35, 1997*

color spitbite aquatint with photogravure and chine collé

44 1/4 x 30 3/4 in.

2002.141



**Radcliffe Bailey (American (b. 1969))**

*Until I Die/Minor Keys, edition 25/35, 1997*

color spitbite and sugar lift aquatint with softground, drypoint,  
photogravure, and chine collé

37 x 30 1/4 in.

2002.120



**After Jean-Michel Basquiat (American (1960–1988))**

*Portfolio II: Charles the First, edition BAT 1/1, 1982/2004*

screenprint

61 x 48 in.

2008.184d



**After Jean-Michel Basquiat (American (1960–1988))**

*Portfolio II: Jawbone of an Ass, edition BAT 1/1, 1982/2005*

screenprint

42 3/4 x 60 in.

2008.184c



**After Jean-Michel Basquiat (American (1960–1988))**

*Portfolio II: Rome Pays Off, BAT 1/1, 1984/2004*

screenprint

44 x 39 7/8 in.

2008.184b



**After Jean-Michel Basquiat (American (1960–1988))**

*Untitled (Head), edition PP 1/5, 1983/2001*

screenprint

40 x 40 in.

2008.126



**Romare Bearden (American (1911–1988))**

*Morning (Carolina Morning), edition 86/175, 1979*

lithograph

21 7/8 x 27 7/8 in.

2016.242



**Romare Bearden (American (1911–1988))**

*The Conversation, edition of 175, 1979*

lithograph

21 1/2 x 28 1/4 in.

2016.240



**Romare Bearden (American (1911–1988))**

*The Lantern, edition 113/175, 1979*

lithograph

28 5/8 x 19 7/8 in.

2011.70



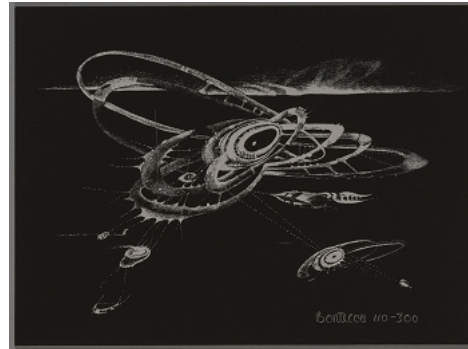
**Lee Bontecou (American (b. 1931))**

*Silkscreen, from the portfolio Ten from Leo Castelli, edition 110/200, 1968*

screenprint on muslin mounted to illustration board

24 x 20 in.

2006.384a



**Lee Bontecou (American (b. 1931))**

*Untitled, from the portfolio The New York Collection for Stockholm, edition 110/300, 1973*

screenprint

9 x 12 in.

2008.209a





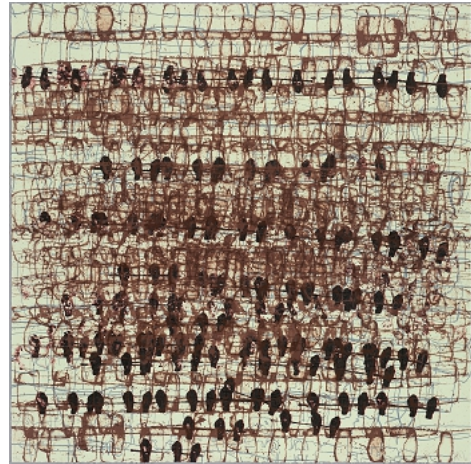
**Mark Bradford (American (b. 1961))**

*Untitled, edition 39/45, 2003*

lithograph

32 1/2 x 32 3/4 in.

2004.250



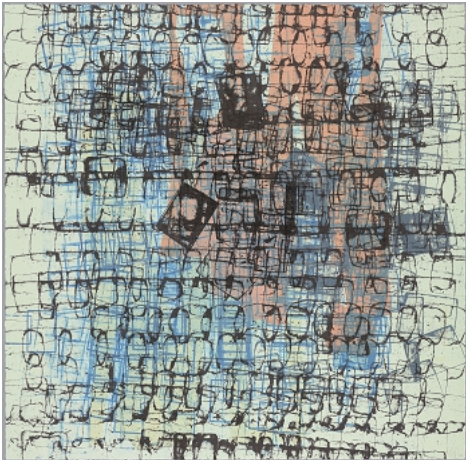
**Mark Bradford (American (b. 1961))**

*Untitled, edition 39/45, 2003*

lithograph

32 1/2 x 32 3/7 in.

2004.251



**Mark Bradford (American (b. 1961))**

*Untitled, edition 39/45, 2003*

lithograph

32 1/2 x 32 3/4 in.

2004.249



**Suzanne Caporael (American (b. 1949))**

*Street Signs, 2010*

monoprint

39 1/4 x 31 1/4 in.

2013.11





**Vija Celmins (American, born Latvia (b. 1938))**  
*Night Sky 3, edition PPIII, 2003*  
photogravure with burnishing, aquatint, and drypoint  
19 3/4 x 23 3/4 in.  
2015.348



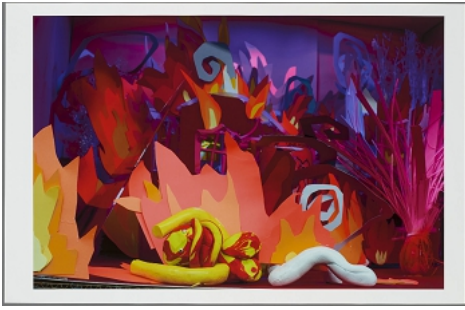
**Vija Celmins (American, born Latvia (b. 1938))**  
*Ocean with Cross #1, edition 51/108, 2005*  
screenprint  
24 1/2 x 28 1/2 in.  
2005.99



**Vija Celmins (American, born Latvia (b. 1938))**  
*Untitled (Web 3), edition PPIII, 2002*  
aquatint and drypoint  
20 1/8 x 24 1/4 in.  
2015.344



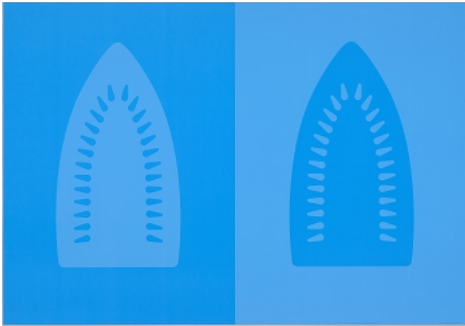
**Vija Celmins (American, born Latvia (b. 1938))**  
*Untitled (Web 4), edition SP6/7, 2002*  
photogravure, aquatint and drypoint with burnishing  
20 1/2 x 24 1/4 in.  
2015.346



**Caitlin Cherry (American (b. 1987))**  
*Fruit Molotov Cocktail, edition 7/10, 2017*  
digital pigment print  
44 x 67 in.  
2017.463



**Willie Cole (American (b. 1955))**  
*Pressed Iron Blossom No. 2, edition 7/90, 2005*  
lithograph  
22 1/8 x 30 in.  
2006.425



**Willie Cole (American (b. 1955))**  
*Virgin of Wisdom (ascending/descending), edition of 9, 2012*  
screenprint  
41 x 58 1/2 in.  
2012.167



**Leonardo Drew (American (b. 1961))**  
*Number 8L, 2010*  
painted wood and string construction, in four parts  
48 x 84 5/8 x 7 1/2 in.  
2019.550



**Joe Feddersen (Native American, Colville Confederated Tribes (b. 1953))**  
*Charmed: Orange Parking Lot*, 2013  
monotype and spraypaint  
30 x 22 in.  
2014.1h



**Joe Feddersen (Native American, Colville Confederated Tribes (b. 1953))**  
*Charmed: Red Deer*, 2013  
monotype and spraypaint  
30 x 22 in.  
2014.1f



**Joe Feddersen (Native American, Colville Confederated Tribes (b. 1953))**  
*Charmed: Red Star*, 2013  
monotype and spraypaint  
30 x 22 in.  
2014.1j



**Helen Frankenthaler (American (1928–2011))**  
*Madame Butterfly*, edition AP 10/14, 2000  
woodcut  
41 3/4 x 79 1/2 in.  
2003.201





**Ellen Gallagher (American (b. 1965))**

*Abu Simbel, edition 8/25, 2005*

photogravure, watercolour, colour pencil, varnish, pomade,

Plasticine, blue fur, gold leaf and crystals

24 1/2 x 35 1/2 in.

2007.386



**Vanessa German (American (b. 1976))**

*no admittance apply at office, 2016*

mixed media assemblage

73 x 30 x 16 in.

2019.412



**Vanessa German (American (b. 1976))**

*sometimes i want to kill you #2, 2016*

mixed media assemblage

76 x 23 x 36 in.

2019.411



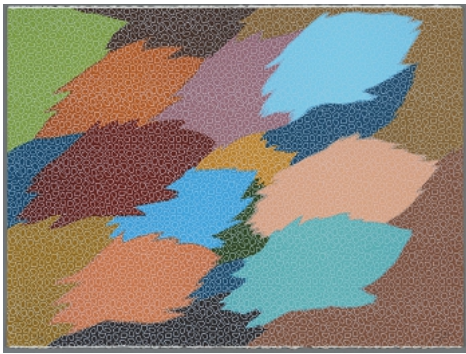
**Jacob Hashimoto (American (b. 1973))**

*The Hashimoto Index I, edition 3/19, 2017*

woodblock

each sheet: 7 5/8 x 7 5/8 inches; each frame: 10 x 10 inches

2017.617a-rrrr



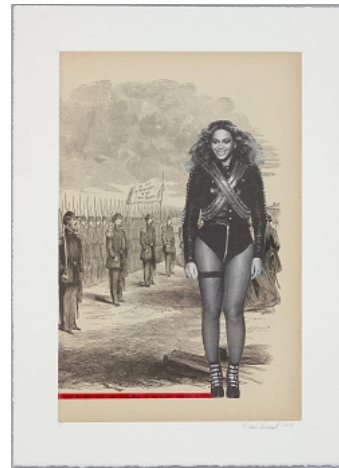
**Edgar Heap of Birds (Native American (b. 1954))**

*Neuf for Modoc, edition 11/30, 2001*

lithograph

22 1/2 x 30 in.

2015.816



**Mildred Howard (American (b. 1945))**

*I've Been a Witness to this Game I, 2016*

color monoprint/digital on found paper with collage

20 5/8 x 15 1/8 in.

2016.164



**Mildred Howard (American (b. 1945))**

*I've Been a Witness to this Game XI, 2016*

color monoprint/digital with collage and gold leaf

20 5/8 x 15 1/8 in.

2016.169



**Mildred Howard (American (b. 1945))**

*I've Been a Witness to this Game XII, 2016*

color monoprint/digital with collage and gold leaf

20 5/8 x 15 1/8 in.

2016.170



**Mildred Howard (American (b. 1945))**  
*I've Been a Witness to this Game XIV*, 2016  
 color monoprint/digital with collage and gold leaf  
 20 5/8 x 15 1/8 in.  
 2016.171



**Mildred Howard (American (b. 1945))**  
*I've Been a Witness to this Game XV*, 2016  
 color monoprint/digital with collage and gold leaf  
 20 5/8 x 15 1/8 in.  
 2016.172



**Mildred Howard (American (b. 1945))**  
*Millennials & XYZ #IV*, 2014  
 monoprint/digital on collaged found papers  
 20 1/2 x 15 in.  
 2015.10



**Mildred Howard (American (b. 1945))**  
*Millennials & XYZ #IX*, 2014  
 monoprint/digital on collaged found papers  
 20 1/2 x 15 in.  
 2015.11





**Mildred Howard (American (b. 1945))**  
*Millennials & XYZ #VII*, 2014  
 monoprint/digital on collaged found papers  
 20 1/2 x 15 in.  
 2015.12



**Mildred Howard (American (b. 1945))**  
*Millennials & XYZ #XII*, 2014  
 monoprint/digital on collaged found papers  
 20 1/2 x 15 in.  
 2015.13



**Mildred Howard (American (b. 1945))**  
*Millennials & XYZ #XIV*, 2014  
 monoprint/digital on collaged found papers  
 20 1/2 x 15 in.  
 2015.14



**Salomon Huerta (American, born Mexico (b. 1965))**  
*Untitled (Persian Blue House)*, edition 4/30, 2004  
 color aquatint etching with drypoint  
 24 3/4 x 37 3/4 in.  
 2004.200



**Salomon Huerta (American, born Mexico (b. 1965))**  
*Untitled (Vermillion House), edition 4/30, 2004*  
color aquatint etching with drypoint  
35 1/4 x 33 1/5 in.  
2004.201



**Jeff Koons (American (b. 1955))**  
*Gazing Ball (Klimt Kiss), edition 5/20, 2019*  
archival pigment print, glass  
38 15/16 x 38 1/16 in.  
2019.224



**Jeff Koons (American (b. 1955))**  
*Gazing Ball (van Gogh Wheatfield with Cypresses), edition 5/20,*  
2017  
archival pigment print, glass  
33 5/8 x 40 7/16 in.  
2018.83



**Jacob Armstead Lawrence (American (1917–2000))**  
*The Studio, edition AP 10/10, 1996*  
lithograph  
30 x 22 1/8 in.  
2016.36



**Jacob Armstead Lawrence (American (1917–2000))**  
*Tools, edition 29/300, 1977*  
lithograph  
22 x 18 1/4 in.  
2010.82



**Glenn Ligon (American (b. 1960))**  
*Boy on Tire, edition 14/108, 2004*  
screenprint  
41 x 31 1/2 in.  
2004.359



**Hung Liu (American, born China (b. 1948))**  
*Official Portraits: Citizen, edition 12/30, 2006*  
lithograph with collage  
30 1/4 x 30 in.  
2006.231



**Hung Liu (American, born China (b. 1948))**  
*Official Portraits: Immigrant, edition 12/30, 2006*  
lithograph with collage  
30 1/4 x 30 in.  
2006.233





**Hung Liu (American, born China (b. 1948))**  
*Official Portraits: Proletarian, edition 12/30, 2006*  
 lithograph with collage  
 30 1/4 x 30 in.  
 2006.235



**Nicola Lopez (American (b. 1975))**  
*Half-Life, 2007*  
 lithograph and relief on mylar  
 crate: 101 1/2 x 83 x 5 inches  
 2007.510



**James Luna (Native American, Luiseño and Mexican-American (b. 1950))**  
*Sumojazz, edition 1/1, 2011*  
 monotype  
 30 x 22 1/2 in.  
 2018.383



**James Luna (Native American, Luiseño and Mexican-American (b. 1950))**  
*Sumojazz, edition 1/1, 2011*  
 monotype  
 30 x 22 1/2 in.  
 2018.384



**Larry McNeil (Native American, Tlingit–Nisga'a (b. 1955))**

*Diacritical Formline, Chilkat Style, edition 4/20, 2007*

lithograph  
22 1/2 x 30 in.  
2015.810



**Julie Mehretu (American, born Ethiopia (b. 1970))**

*Diffraction, edition 22/35, 2005*

color sugar lift aquatint with aquatint, spitbite aquatint and  
hardground etching on Gampi paper chine collé  
35 1/2 x 46 3/4 in.  
2006.3



**Julie Mehretu (American, born Ethiopia (b. 1970))**

*Local Calm, edition 22/35, 2005*

sugar lift aquatint with color aquatint and spitbite aquatint, soft  
and hardground etching and engraving on Gampi paper chine  
collé  
35 1/2 x 46 3/4 in.  
2006.4



**Julie Mehretu (American, born Ethiopia (b. 1970))**

*The Residual, edition 8/25, 2007*

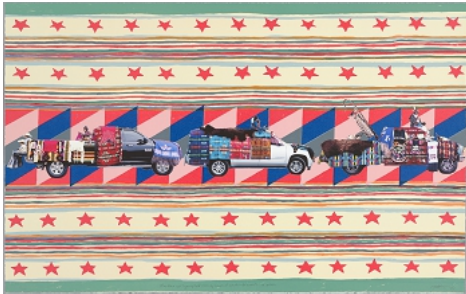
color sugar lift and spitbite aquatints with hard ground etching,  
drypoint, and burnishing  
40 3/4 x 50 in.  
2008.117



**Laura Owens (American (b. 1970))**  
*Untitled (LO 272), edition 26/40, 2004*  
 spitbite aquatint with softground etching  
 39 1/2 x 44 3/8 in.  
 2008.234



**Robert Rauschenberg (American (1925–2008))**  
*Pegasits, from ROCI USA (Wax Fire Works), edition 11/22, 1990*  
 screenprint, wax and polished steel with painted silver-leafed  
 wood chair  
 72 3/4 x 96 3/4 x 17 in.  
 2018.39



**Wendy Red Star (Native American, Crow (b. 1981))**  
*iilalée = car (goes by itself) + ii = by means of which +*  
*dáanniili = we parade, edition 1/20, 2016*  
 lithograph with archival pigment ink photographs  
 24 x 38 in.  
 2016.87



**Wendy Red Star (Native American, Crow (b. 1981))**  
*Rez Car 1, edition 7/12, 2010*  
 lithograph  
 22 3/8 x 30 in.  
 2015.811





**Wendy Red Star (Native American, Crow (b. 1981))**

*Rez Car 2, edition 3/12, 2010*

lithograph  
22 3/8 x 30 in.  
2015.812



**Wendy Red Star (Native American, Crow (b. 1981))**

*The (HUD), edition 12/12, 2010*

lithograph and archival pigment print  
30 x 22 3/8 in.  
2015.813



**Wendy Red Star (Native American, Crow (b. 1981))**

*Yakima or Yakama - Not For Me To Say, edition 2/20, 2015*

lithograph with archival pigment ink photograph  
24 x 40 in.  
2016.88



**Lorna Simpson (American (b. 1960))**

*Wigs, edition 13/15, 1994*

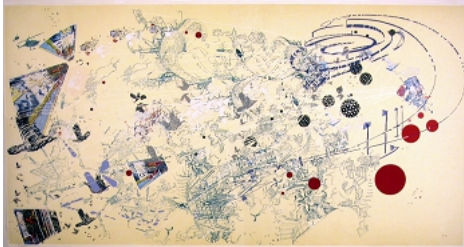
waterless lithograph on felt  
total installation measures 72 x 162 1/2 inches, panels a-r: 23 x  
18 inches each, panels s-u: 32 x 16 inches  
2003.75a-u



**Kiki Smith (American (b. 1954))**  
*My Blue Lake, edition 26/41, 1995*  
photogravure, lithograph  
43 1/2 x 54 3/4 in.  
2002.80



**Jessica Stockholder (American (b. 1959))**  
*Blue Fence, 2005*  
collage  
21 7/8 x 30 in.  
2018.281



**Sarah Sze (American (b. 1969))**  
*Day, edition 22/27, 2001–03*  
lithograph and screenprint  
37 5/8 x 71 in.  
2003.220b



**Sarah Sze (American (b. 1969))**  
*Night, edition 22/27, 2001–03*  
lithograph and screenprint  
37 5/8 x 71 in.  
2003.220a

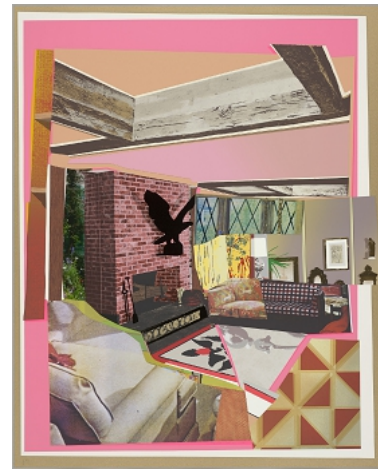


**Mickalene Thomas (American (b. 1971))**

*Interior: Blue Couch and Green Owl, edition 5/26, 2016*  
 mixed media collage, screenprint, woodblock, digital print and  
 flocking

42 3/8 x 34 1/4 in.

2017.278



**Mickalene Thomas (American (b. 1971))**

*Interior: Fireplace with Blackbird, edition 5/26, 2016*  
 mixed media collage, screenprint, woodblock, digital print,  
 etching, gold leaf, wood veneer, and flocking

42 3/8 x 34 1/4 in.

2017.277



**Mickalene Thomas (American (b. 1971))**

*Interior: Zebra with Two Chairs and Funky Fur, edition 24/24,*  
 2014

relief, intaglio, lithography, digital, collage, enamel paint, gold  
 leaf, colored pencil

44 x 53 in.

2016.50



**Mickalene Thomas (American (b. 1971))**

*Landscape Majestic, edition 25/30, 2011*  
 woodblock, silkscreen and digital print collage

52 x 68 5/8 in.

2017.275





**Mickalene Thomas (American (b. 1971))**

*Trois Divas (A E I O U and sometimes Y) 1*, edition 4/20, 2009  
screenprint with rhinestones  
16 x 16 in.  
2015.184a



**Mickalene Thomas (American (b. 1971))**

*Trois Divas (A E I O U and sometimes Y) 2*, edition 4/20, 2009  
screenprint with rhinestones  
16 x 16 in.  
2015.184b



**Mickalene Thomas (American (b. 1971))**

*Trois Divas (A E I O U and sometimes Y) 3*, edition 4/20, 2009  
screenprint with rhinestones  
16 x 16 in.  
2015.184c

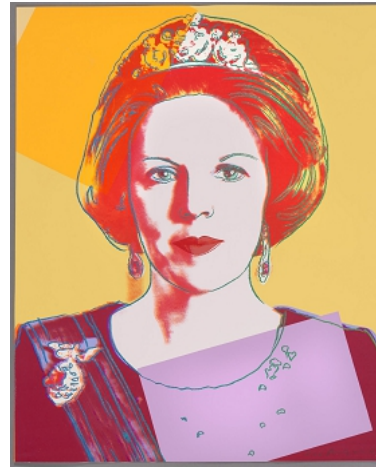


**Mickalene Thomas (American (b. 1971))**

*When Ends Meet*, edition 4/20, 2007  
screenprint with hand-applied rhinestones  
31 7/8 x 28 in.  
2007.498b



**Andy Warhol (American (1928–1987))**  
*Reigning Queens (Royal Edition): Queen Beatrix of the Netherlands (II.340A), edition RHC 2/2, 1985*  
screenprint with diamond dust  
39 1/2 x 31 1/2 in.  
2003.129g



**Andy Warhol (American (1928–1987))**  
*Reigning Queens (Royal Edition): Queen Beatrix of the Netherlands (II.341A), edition RHC 2/2, 1985*  
screenprint with diamond dust  
39 1/2 x 31 1/2 in.  
2003.129h



**Andy Warhol (American (1928–1987))**  
*Reigning Queens (Royal Edition): Queen Elizabeth II of the United Kingdom (II.335A), edition RHC 2/2, 1985*  
screenprint with diamond dust  
39 1/2 x 31 1/2 in.  
2003.129b



**Andy Warhol (American (1928–1987))**  
*Reigning Queens (Royal Edition): Queen Margrethe II of Denmark (II.344A), edition RHC 2/2, 1985*  
screenprint with diamond dust  
39 1/2 x 31 1/2 in.  
2003.129k



**Andy Warhol (American (1928–1987))**

*Reigning Queens (Royal Edition): Queen Ntombi Twala of Swaziland (II.346A), edition RHC 2/2, 1985*

screenprint with diamond dust

39 1/2 x 31 1/2 in.

2003.129m



**Andy Warhol (American (1928–1987))**

*Reigning Queens: Queen Elizabeth II of the UK, edition TP 23/30, 1985*

unique screenprint on Lenox Museum Board

39 1/2 x 31 1/2 in.

2013.59a



**Andy Warhol (American (1928–1987))**

*Reigning Queens: Queen Margrethe II of Denmark, edition TP 23/30, 1985*

unique screenprint on Lenox Museum Board

39 1/2 x 31 1/2 in.

2013.59c



**Andy Warhol (American (1928–1987))**

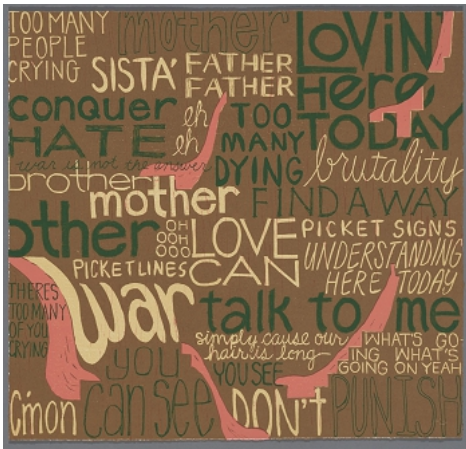
*Reigning Queens: Queen Ntombi Twala of Swaziland, edition TP 23/30, 1985*

unique screenprint on Lenox Museum Board

39 1/2 x 31 1/2 in.

2013.59d





**Marie K. Watt (Native American, Seneca (b. 1967))**  
*Companion Species (Anthem), edition 6/14, 2017*  
woodcut  
17 1/2 x 18 1/2 in.  
2018.400



**Kehinde Wiley (American (b. 1977))**  
*Untitled (The World Stage: Brazil), 2012*  
oil on canvas  
107 x 83 in.  
2019.184